

STRONG PAST. STRONGER FUTURE.





BUILT NOT BOUGHT.

SEE Group is a family-built group of companies specialising in civil construction, mining and engineering.

With offices in the Gold Coast, Sunshine Coast, and Northern New South Wales, SEE Group is an award-winning company delivering major infrastructure and urban development projects across Queensland and New South Wales. With a dedicated team of over 450 professionals, we have been bringing ambitious ideas to life for over 35 years.

Our group comprises three key businesses: SEE Civil, SEE Quarry, and SEE Fleet. Each plays a crucial role in meeting the civil construction and materials needs of our projects, creating comprehensive construction solutions for our clients.

What sets us apart is our robust, vertically integrated self-perform model. This approach allows us to deliver optimal results, providing value for money, driving innovation to reduce construction costs, and maintaining control over projects from start to finish. At SEE Group, we don't just build structures; we build lasting relationships and solutions that stand the test of time.

SEE 35 YEARS STRONGER

SEE ▲ CIVIL

SEE ▲ FLEET

SEE ▲ QUARRY

At SEE Group, we don't just build structures, we build lasting relationships and solutions that stand the test of time.



WORK THAT LASTS

[OUR PROMISE]

WORK THAT LASTS



We leverage our rich heritage and proven expertise to be the hard-working link between ambitious ideas and sustainable realities. We aim to deliver exceptional construction solutions for our clients, and stronger more resilient futures for our communities.

At SEE Group, we're more than the projects we complete—we build lasting relationships, solve complex problems, and turn ambitious ideas into reality. With us, a handshake means what it should, and a promise—even more so. Our work stands the test of time, not only in our team's effort and hard-work but also in the relationships we forge along the way.

With innovation, dedication, and a commitment to excellence, we ensure that our legacy is one of enduring impact and continuous progress. For our people, that's the stuff that means the most — structures stand, but it's the work that truly lasts. Work that lasts.

A FOUNDATION FOR SUCCESS

[INTEGRITY]

OWN OUR
INPUT

We uphold accountability and ethical conduct in all our actions. This means making decisions we can stand by, taking responsibility for our actions and work, and ensuring that safety is everyone's responsibility.

[INNOVATION]

LOOK
AHEAD

We continuously seek new ways to improve and excel. We're agile and flexible in our approach, always developing our skills and expertise, and remaining open to new ideas and innovative solutions.

[COMMUNITY]

WORK
AS ONE

We're all about teamwork, collaboration and collective growth. We celebrate success and achievements together, work as one cohesive team and ensure we recognise and utilise everyone's skills and contributions.

[DEDICATION]

GIVE OUR
ALL

We're passionate and committed in everything we do. We work with a 'boots and all' attitude, driven towards success and maintaining a strong commitment to our goals and objectives.

[CAPABILITIES]

SEE SOLUTIONS NOT PROBLEMS.

WE SPECIALISE IN
SOLUTIONS THAT
STREAMLINE THE
JOBSITE WITHOUT
COMPROMISING QUALITY.



INFRASTRUCTURE



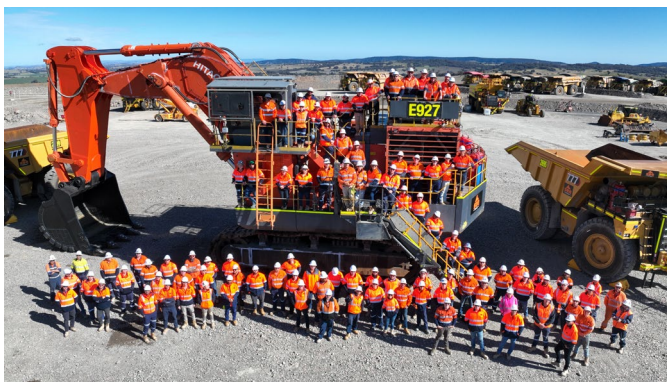
URBAN AND INDUSTRIAL DEVELOPMENT



NATURAL DISASTER RECONSTRUCTION



AIRPORTS



RESOURCES AND MINING INFRASTRUCTURE



WATER INFRASTRUCTURE

OUR BUSINESSES.

WE PRIDE OURSELVES ON BEING COLLABORATIVE AND EASY TO WORK WITH.

Being a family-built business, we have a transparent approach to getting the job done, on time and on budget. Our collaborative culture is ingrained in our businesses, enabling us to cooperate with all stakeholders and be agile in our decision making to ensure quality outcomes. Through the combined experience and capability of each SEE Group business we have the ability to problem solve, make decisions, invest in innovation and adapt quickly across the life-cycle of civil construction projects.



SEE CIVIL

PRACTICALLY VISIONARY.

BUILDING THE FUTURE WITH PRACTICAL INNOVATION.

SEE Civil specialises in civil construction and engineering to deliver construction solutions for major infrastructure projects, aviation, mining and resources, and urban and commercial developments.



SEE QUARRY

UNEARTHING SOLUTIONS.

UNEARTHING SMARTER SOLUTIONS EVERY DAY.

SEE Quarry is a specialist quarrying and material supply company. We've established ourselves as a market leader in the delivery of high volume, high specification material supplies to projects through SEQ and NSW including fixed and mobile crushing operations, sand mining and foam bitumen production.



SEE FLEET

A VEHICLE FOR VISION.

DRIVING PROGRESS THROUGH RELIABLE FLEET MANAGEMENT.

SEE Fleet offers cutting-edge fleet and asset solutions accompanied by comprehensive maintenance services. Our expertise extends to fabrication, design, and the creation of tailor-made, specialised attachments for heavy equipment, ensuring they are perfectly suited for the task at hand.

[TESTIMONIALS]

WHAT OUR CLIENTS SAY.



A large portion of Tamborine Mountain Road was lost to landslide, following a large rock slide from the upslope face during the December 2020 (Event 21C) severe weather natural disaster event in the Region. RoadTek were on site the next day, restoring access to residents that had been cut off and beginning the make safe operation at this large and technically challenging site. The ensuring emergency scaling works continued for a further 6 months before SEE Civil established and began the permanent restoration works. All in, this was a mammoth 2 year operation that involved a variety of skills and resources over the course of the reconstruction period.

NICHOLAS LANCASHIRE, SENIOR PROJECT MANAGER, DEPARTMENT OF TRANSPORT AND MAIN ROADS QLD

SEE Civil's project team's ability to integrate collaboratively with our design engineers helped proactively generate value-for-money solutions through the design development and approval processes for our client. During the tender and delivery phases SEE's experienced project team focused on identifying opportunities and improve the civil

works construction methodology and program, saving both on time and costs whilst reducing risks/challenges faced with the complex site ground conditions and difficult topography.

DANIEL COLLINS, PRINCIPAL ENGINEER - QLD, CALIBRE GROUP

Thanks to you and your team for the works on this project and the extra effort this week that went into ensuring DRFA MLH52 was a success. Special thanks for proposing better options and aligning all the resources to get the work done by Saturday. Thanks to the workers and subbies for being available after hours and weekends. It is a pleasure working with them all. Well done and thanks.

ANDREW KEATS, LEAD INSPECTOR - CIVIL / SAFETY ADVISOR | GHD PTY LTD

"SEE Civil personnel have developed very good working relationships with the RMS site management team representatives based on an honest and open approach... Whilst the contract with RMS is based on a GC21 Schedule of Rates construct only contract, the atmosphere on site between the parties generally felt more like an

alliance due to the contracting cooperative approach. I look forward to working with SEE Civil again in the future".

PETER PRIEST, PROJECT MANAGER, ROADS AND MARITIME SERVICES PACIFIC HIGHWAY UPGRADE - WOOLGOOLGA TO BALLINA PROJECT

"SEE's environmental management continued to be excellent and of a very high standard. They received a letter from the Dpt of Primary Industries Fisheries highlighting the "excellent environmental performance achieved by SEE Civil". This form of recognition is unprecedented from a Government Agency".

CONOR HANLON, PORTION LEAD, PACIFIC COMPLETE, PACIFIC HIGHWAY UPGRADE, WOOLGOOLGA TO BALLINA

"SEE Civil were transparent throughout the tender process and provided value-for-money solutions to a range of Site issues ...SEE have delivered high quality work, been responsive and accommodating to client change requests and are of a size that they can swiftly alter their resources (up or down) to accommodate program scope

change".

MICHAEL STONE, GENERAL MANAGER - QLD, PEET LIMITED

"SEE Civil performed exceptionally well against programmed time-frames...The collaborative effort between the Contractor (SEE), Subcontractors and Administrator ensured the project was successful – project was commissioned four weeks prior to initial anticipated completion date."

KYLE FURNESS, TMR REPRESENTATIVE, DTMR – SOUTH COAST REGION, MOUNT LINDESAY HIGHWAY - SOUTH MACLEAN PROJECT

"SEE Civil personnel have developed positive and collaborative working relationships with all Airport stakeholders. Their constructive attitude towards the early identification and resolution of potential issues has resulted in various win/win outcomes and the avoidance of unnecessary delays".

TRAVIS CALLAGHAN, GENERAL MANAGER INFRASTRUCTURE, QUEENSLAND AIRPORTS LTD



OUR CASE STUDIES AND PROJECTS.



ANOTHER  SEE SOLUTION

MAJOR PROJECT

ARTC

CLIENT: AUSTRALIAN RAIL
TRACK CORPORATION (ARTC)
VALUE: \$680M
TIMING: 2020 - 2023



INLAND RAIL - NARRABRI TO NORTH STAR (N2NS)

171

KILOMETRES
OF TRACK
UPGRADED

75

LEVEL CROSSINGS
UPGRADED, RELOCATED
OR CONSOLIDATED

235

RAIL
CULVERTS
CONSTRUCTED

SNAPSHOT OF SEE CIVIL'S
RECENT WORK FOR THE
AUSTRALIAN RAIL TRACK
CORPORATION

OVERVIEW

The Narrabri to North Star section of Inland Rail upgraded 171km of existing rail corridor, constructed approximately 2km of new track, demolished and constructed multiple bridges and culvert crossings, and included signalisation and upgrades to level crossings.

This project delivered a new section of the Inland Rail project that became a 1,700 kilometre freight line connecting Melbourne and Brisbane via regional Victoria, New South Wales, and Queensland.

Trans4m Rail, a joint venture between SEE Civil and John Holland, was appointed the construction contract for Phase 1: Inland Rail's Narrabri to North Star project in regional New South Wales. The N2NS section is one of 13 projects and crosses three local government areas of Gwydir, Narrabri, and Moree Plains.

On completion, the new Inland Rail project delivered better connectivity and better freight access for regional producers and manufacturers across Eastern Australia.



WORK THAT LASTS

MAJOR PROJECT



Transport
for NSW

CLIENT: TRANSPORT FOR NSW
VALUE: \$386M
TIMING: 2015 - CURRENT



9 MILLION TONNES OF
QUARRY MATERIAL
PRODUCED

83K SQUARE METRES
OF PAVEMENT
CONSTRUCTED

160K TONNES OF
FOAM BITUMEN
PAVEMENT PLACED

SNAPSHOT OF SEE CIVIL'S
RECENT WORK FOR THE
PACIFIC HIGHWAY UPGRADES

"SEE Civil personnel have developed very good working relationships with the RMS site management team representatives based on an honest and open approach.

Whilst the contract with RMS is based on a GC21 Schedule of Rates construct only contract, the atmosphere on site between the parties generally felt more like an alliance due to the contracting cooperative approach. I look forward to working with SEE Civil again in the future".

PETER PRIEST, PROJECT MANAGER,
ROADS AND MARITIME SERVICES PACIFIC
HIGHWAY UPGRADE - WOOLGOOLGA TO
BALLINA PROJECT

The Woolgoolga to Ballina (W2B) project was Australia's largest regional infrastructure project to date and has duplicated 155km of the Pacific Highway into four lanes. In 2016, SEE Civil was awarded the first early works package and quickly became the Contractor of Choice for Pacific Complete by offering innovative and collaborative solutions driving down costs for the client. Between 2016 and 2020, SEE Civil managed repeat portions of work on the project and performed \$386M of work via 9 work packages.



PACIFIC HIGHWAY UPGRADE WOOLGOOLGA
TO BALLINA EARTHWORKS PACKAGE 2
TIMING: 2019 - 2020 | VALUE: \$30M



PACIFIC HIGHWAY WOOLGOOLGA TO
BALLINA SECTION 5 FOAMED BITUMEN
TIMING: 2018-2020 | VALUE: \$25M

The Pacific Highway Upgrade (Woolgoolga to Ballina) Earthworks Package 2 involved the construction of the Pacific Highway with Portion B Chainage 82000 – 89400 . The works we undertook generally commenced north of the Maclean Interchange and were completed at the northern end of the Iluka Interchange.

Section 5 Foamed Bitumen project, was for the supply and placement of the foamed bitumen pavement on the northbound carriageway of the Pacific Highway from chainage 81300 to chainage 96250 and the southbound carriageway of the Pacific Highway from chainage 82000 to chainage 96250.



PACIFIC HIGHWAY UPGRADE WOOLGOOLGA
TO BALLINA WAVE 4 EARLY WORKS
TIMING: 2016 - 2017 | VALUE: \$49M



PACIFIC HIGHWAY UPGRADE W2B WOODBURN
TO BROADWATER SERVICE ROAD
TIMING: 2017 - 2018 | VALUE: \$41M

The Wave 4 section of the Pacific Highway Upgrade between Woolgoolga to Ballina (W2B) is just north of Grafton and traverses areas having significant depths of soft soils. These early works were undertaken to ensure appropriate management, pre-load, and settlement of soft soil areas prior to major roadworks commencing on this section of the highway.

The 3.5km Woodburn-Broadwater Service Road project is a vital part of the Pacific Highway Upgrade between Woodburn and Broadwater in New South Wales. The two-lane road offered an alternative route for motorists while the adjacent Pacific Highway was being upgraded. The project included clearing and grubbing, earthworks, drainage, pavement construction, road barriers and more.

INFRASTRUCTURE

INFRASTRUCTURE



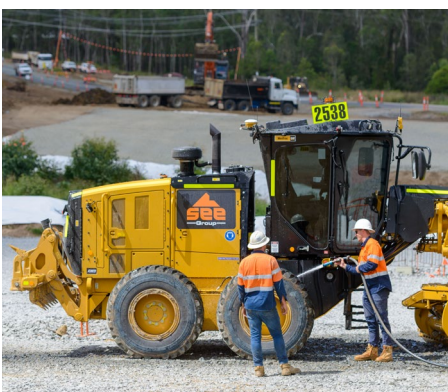
CHAMBERS FLAT ROAD UPGRADE

CLIENT: LOGAN CITY COUNCIL | VALUE: \$37.3M | 2022 - CURRENT

As Logan's population continues to grow, the need for improved road infrastructure becomes paramount. Recognising this, Logan City Council is upgrading Chambers Flat Road, a vital east-west link in the local road network. The project aims to enhance safety, improve road conditions, and provide better flood immunity. With construction currently underway and expected to be completed in 2024, the Chambers Flat Road upgrade is set to make a positive impact on the region's transportation network.

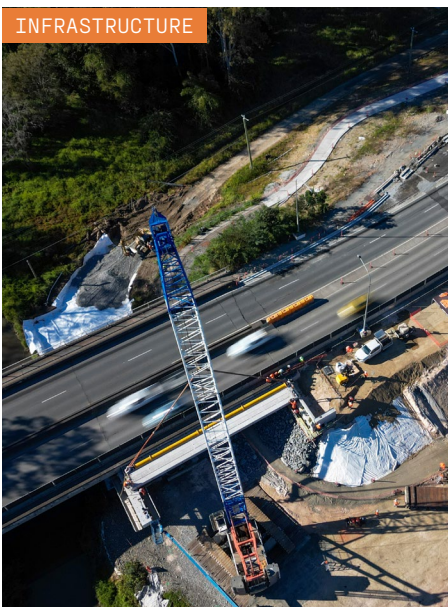
the existing road level. This elevation aims to increase flood immunity, ensuring that the road remains accessible during severe weather events. Moreover, intersections at Kings Way and Greenvale Road will be upgraded to include dedicated turning lanes from Chambers Flat Road, improving traffic flow and reducing congestion.

To minimise disruption to local traffic, SEE Civil will complete construction works in four different zones. This staged approach allows for efficient progress while mitigating inconvenience for commuters. The project also includes wildlife devices throughout the construction footprint. These measures include fauna fencing, escape poles, culvert crossings, and nesting boxes, promoting the safe passage and protection of local wildlife. As Logan's population continues to grow, the Chamber Flat Road upgrade project will improve road infrastructure and connectivity. The project's approach, including widened lanes, improved intersections, and enhanced flood immunity, will undeniably benefit both local residents and commuters.



Logan City Council has engaged SEE Civil to undertake the important upgrade. The primary objective is to create a safer, smoother and more flood resistant road by widening it to 3.5m traffic lanes and 3m wide sealed shoulders. This will allow for improved traffic flow and offer increased safety for every day road users. Additionally, the project will improve sight distances at bends and crests, further enhancing road safety. One of the notable aspects of the Chambers Flat Road upgrade is the construction of a new bridge over Norris Creek, rising up to 8m higher than

INFRASTRUCTURE



LOGANLEA ROAD UPGRADE

CLIENT: LOGAN CITY COUNCIL | VALUE: \$60.2M | 2023 - CURRENT

SEE Civil is engaged by Logan City Council to construct the Loganlea Road upgrade between the Logan Motorway at Meadowbrook and the northbound M1 on-ramp at Slacks Creek.

The Loganlea Road upgrade will significantly improve traffic flow and the four-lane road will also provide better access to public transport for commuters traveling to and from Brisbane.

Located south of Brisbane, Queensland, Logan is one of the fastest-growing regions in the state. The Loganlea Road upgrade is a major infrastructure project to improve road safety and accessibility for commuters and to support the continued growth of the area.

The Loganlea Road upgrade is a critical infrastructure project that will support the continued growth of the Logan region.

Construction began in April 2023 and is expected to be completed late-2024.

The project involves widening the road to six lanes and upgrading existing intersections. The upgrade includes the construction of dedicated cycle lanes and footpaths and will promote active and alternative transport options.

This project is being delivered under Logan City Council's Major Roads Program and is partly funded by the Australian Government through the Investment Road and Rail Program.

TIER ONE SOLUTIONS WITHOUT THE TEARS.

TIER ONE SOLUTIONS DON'T
ALWAYS NEED TO COME WITH
TIER ONE PROBLEMS.



MAJOR PROJECT



**Queensland
Government**

Department of Transport and Main Roads

CLIENT: DEPARTMENT OF
TRANSPORT AND MAIN ROADS
VALUE: \$143M
TIMING: 2016 - 2023



MOUNT LINDESAY HIGHWAY UPGRADE

143 MILLION
OF CONSTRUCTION
COMPLETE

5 FROM 6
COMPETITIVE
TENDERS WON

6 NEW
SIGNALISED
INTERSECTIONS

SNAPSHOT OF SEE CIVIL'S
RECENT WORK FOR THE MOUNT
LINDESAY HIGHWAY UPGRADES

The Mount Lindesay Highway (MLH), one of Queensland's busiest routes with heavy freight traffic, faces challenges from dense residential and commercial developments. In 2016, the Department of Transport and Main Roads (DTMR) funded improvements to boost safety, reduce congestion, and enhance flood immunity. Over the past five years, SEE Civil has secured five projects on the MLH, thanks to our cost-effective solutions, adept management of environmentally sensitive areas and tough terrain, and strong community and stakeholder engagement.



MOUNT LINDESAY HIGHWAY UPGRADE
CAMP CABLE TO TAMBORINE STREET
TIMING: 2020 - 2020 | VALUE: \$13.3M



MOUNT LINDESAY HIGHWAY, STONEY
CAMP ROAD TO CHAMBERS FLAT ROAD
TIMING: 2021-2023 | VALUE: \$54M

"SEE Civil performed exceptionally well against programmed timeframes... The collaborative effort between the Contractor (SEE), Subcontractors and Administrator ensured the project was successful - project was commissioned four weeks prior to initial anticipated completion date."

KYLE FURNESS, TMR REPRESENTATIVE,
DTMR - SOUTH COAST REGION, MOUNT
LINDESAY HIGHWAY - SOUTH MACLEAN
PROJECT

In January 2020, construction commenced for the expansion of the Mount Lindesay Highway in Jimboomba between Camp Cable Road and the intersection of Tamborine and Johanna Street. This involved the duplication of the existing highway and raising the new northbound alignment by 3 meters to improve flood immunity.



MOUNT LINDESAY HIGHWAY, NORTH AND
SOUTH MACLEAN SAFETY IMPROVEMENTS
TIMING: 2019 - 2020 | VALUE: \$21.4M

The North Maclean project, part of the 10-year Mount Lindesay Highway upgrade plan, added a 1.2km service road with signalised junctions and safety features. The South Maclean project extended the service road to Stockleigh Road, removed intersections at Casuarina Road and Maclean Street, and added a new signalised intersection at Stockleigh Road and Casuarina Road.

The HullSEE Joint Venture, including SEE Civil and JF Hull, upgraded the Mount Lindesay Highway between Stoney Camp Road and Chambers Flat Road. This crucial route for the Logan and Beaudesert regions faced congestion and safety issues particularly for commuters traveling eastbound towards Brisbane during peak hours.

Funded by the Australian and Queensland governments this project delivered a significant upgrade of the highway from Stoney Camp Road to Chambers Flat Road. Construction commenced in March 2021 and was opened to traffic in February 2023. The upgrade expanded the highway to four lanes, added median barriers for safety and included safety innovations such as fauna connectivity features and overpasses, and is designed to accommodate the region's ongoing growth sustainably. The upgrade will also improve journey time reliability and reduce the risk of accidents.

With the opening of the upgraded section of Mount Lindesay Highway, the Queensland Government has been successful in delivering on its commitment to improving connectivity and accessibility for regional communities and businesses.

WATER INFRASTRUCTURE



CITY OF
LOGAN

CLIENT: LOGAN WATER
INFRASTRUCTURE ALLIANCE
VALUE: \$20M
TIMING: 2019 - CURRENT



LOGAN WATER INFRASTRUCTURE

SEE Civil have been working with the Logan Water Infrastructure Alliance since 2019 and have to date, delivered seven complex sewer and water infrastructure projects including waste water treatment plants, pump stations, trunk sewer and water upgrades, and emergency storage facilities.

These projects have all greatly contributed to the upgrade and expansion of the sewer and water network within the Logan LGA and have complimented our urban development portfolio in the same region.



CEDAR GROVE WASTE WATER
TREATMENT PLANT
TIMING: 2019 - 2019 | VALUE: \$4M

SEE Civil delivered key works for the waste water treatment plant at Cedar Grove, South East Queensland. Built near the sensitive Logan River, this award-winning project included 8 hectares of wetlands, now home to wading birds and fauna.

It also involved 120,000m³ of bulk, lime-stabilised earthworks, and the installation of pipeworks, precast structures, and concrete weirs.



EAST STREET SEWER
PUMP STATION AND RISING MAIN
TIMING: 2020-2020 | VALUE: \$2.5M

This project developed a pumping station and trunk sewer network for Jimboomba's growth. SEE Civil used Hitachi 36T excavators with height and slew limiting technology for gravity and sewer rising works near high-voltage power lines.

Trenching under live traffic on East Street utilized trenchless micro-tunneling for gravity lines deeper than 7 meters.



ANDREW ROAD, GREENBANK - DEEP
GRAVITY SEWER SYSTEM
TIMING: 2019 - 2019 | VALUE: \$4M

The project involved bulk earthworks to enable the installation of a 9-metre-deep sewer, alongside the installation of 1,200 metres of a gravity sewer system on a live road.

This also included the reinstatement of the road, minor sewer rising main works, and the construction of a discharge manhole, all while effectively managing local traffic.



PRIESTDALE RD, ROCHEDALE - SEWER &
STORMWATER INFRASTRUCTURE UPGRADES
TIMING: 2020 - 2020 | VALUE: \$2.3M

This project built an emergency wet weather storage facility, adding 240kL of sewer retention to reduce sewage discharge into stormwater.

SEE Civil upgraded drainage at Woodlands Park and Priestdale Road, installing box culverts to replace old stormwater pipes and preventing significant runoff from minimal rainfall.

NATURAL DISASTER RECONSTRUCTION

NATURAL DISASTER RECONSTRUCTION



TYALGUM ROAD, RESTORATION OF MAJOR LANDSLIPS

CLIENT: TWEED SHIRE COUNCIL | VALUE: \$19.5M | 2023 - CURRENT

The Tweed Shire LGA experienced significant weather damage causing landslips as a result of extreme weather experienced in early 2022.

SEE Civil were appointed to undertake the design and construct of the landslip sites at the following locations: Reserve Creek Road, Tyalgum Road and Limpinwood Site A & B.

We advanced the design from 30% to 100%, developing a 100-year temporary slope retention solution. Our work involved engaging specialist subcontractors for large diameter bored piles, rope access, soil nailing, and shotcreting.

NATURAL DISASTER RECONSTRUCTION



TWEED SHIRE COUNCIL FLOOD RECOVERY WORKS

CLIENT: TWEED SHIRE COUNCIL | VALUE: \$10M | 2022 - 2022

In February 2022, a severe weather event hit South East Queensland and Northern New South Wales, causing widespread devastation. SEE Civil quickly responded, mobilising over 50 pieces of plant and workforce within 2 days of meeting with Tweed Shire Council. In another 2 days, the total grew to around 150, split into 10 crews

working up to 7 days a week and 12 hours a day, managed from SEE Civil's Chinderah depot. Impressed by SEE Civil's efforts, Tweed Shire Council requested assistance in repairing local roads. SEE Civil was then engaged for a collaborative Early Contractor Involvement phase to design remediation options for 8 major landslips in Tweed Shire.

NATURAL DISASTER RECONSTRUCTION



DISASTER RECOVERY FUNDING ARRANGEMENTS RATHDOWNEY AND BOONAH BEAUDESERT ROAD

DEPARTMENT OF TRANSPORT AND MAIN ROADS | VALUE: \$54M | 2022 - CURRENT

SEE Civil was awarded another Disaster Recovery Funding Arrangements (DRFA) contract for the DTMR South Coast under a cost reimbursable model. These works were awarded under a preferred contractor arrangement. Early Tender Involvement and award resulted from SEE Civil's strong relationship with DTMR and performance on

the First Response Emergency Works (FREW) Tamborine Mountain Road project. The works span multiple sites and are scheduled to be completed within 12 months.

The project aims to reconstruct various sites across the South Coast network following damage from the 2022 DRFA event.

NATURAL DISASTER RECONSTRUCTION



FIRST RESPONSE EMERGENCY WORKS (FREW) TAMBORINE MOUNTAIN ROAD

DEPARTMENT OF TRANSPORT AND MAIN ROADS | VALUE: \$15M | 2021 - 2022

The Department of Transport and Main Roads (TMR) engaged SEE Civil to restore Tamborine Mountain Road, known locally as the "Goat Track," after landslips caused by heavy rainfall in December 2020. SEE Civil used specialised equipment and methods to safely manage the high-risk construction without delaying the timeline. The project utilised sky

cranes, drones, and customised equipment to expedite delivery, allowing the community to regain access to the road and eliminating a 45-minute detour. Emergency services' response times improved significantly, and the innovative methods used have set a new benchmark for TMR slope remediation projects.

URBAN DEVELOPMENT



URBAN

PROVIDENCE ESTATE

CLIENT: STOCKLAND DEVELOPMENT | VALUE: \$235M | 2015 - CURRENT

Providence Estate, formerly owned by Oakland Properties and now a development for Stockland is a premier Queensland development in the busy Ripley Valley.

Providence is the largest masterplanned community in the Ripley Valley growth corridor where there is a massive \$4.4 billion worth of residential projects currently underway, which will provide around 50,000 dwellings to house

120,000 people.

SEE Civil has completed various stages at Providence combining urban residential, retail development and schools as well as major upgrades to existing road infrastructure and trunk infrastructure. SEE Civil has delivered, and is still currently delivering, in excess of 1,950 residential lots since June 2015.



URBAN

FLAGSTONE ESTATE

CLIENT: PEET LIMITED | VALUE: \$137M | TIMING: 2018 - CURRENT

Flagstone Estate is a new Master Plan community located in Logan, Queensland. The site master plan encompasses 12,000 residential lots and includes 126ha of commercial precincts. The development forms part of the Greater Flagstone Priority Development Area (State PDA). At completion is predicted to be home to more than 30,000 people by 2043.



URBAN

COVELLA RESIDENTIAL ESTATE

CLIENT: AVID PROPERTY GROUP | VALUE: \$86.5M+ | 2017 - CURRENT

SEE Civil was engaged in 2017 to begin construction work on one of Greenbank's most prominent development sites and is proud to be working on site still to this day. This master-planned residential community is located in the heart of Greenbank. Houses are tucked away within 50ha of lush green bushland just 12 minutes from Springfield lakes.

The project works consist of:

- Bulk earthworks & civil works
- External road infrastructure upgrades.
- Construction of a new sewage pumping station.
- Management of vegetation retention and clearing.



URBAN

BROOKHAVEN ESTATE

CLIENT: FRASERS PROPERTY | VALUE: \$40M | 2018 - CURRENT

Brookhaven Estate is a master planned residential community located in Bahrs Scrub within the Logan City Council District. The project is in close proximity to Beenleigh Town Centre and the M1 between Brisbane and Gold Coast.

The project works consisted of:

- Bulk earthworks and civil works for 491 lots to date.

- Trunk water and sewer infrastructure.
- Multiple external roads upgraded.
- Construction of a flood bund accommodating fish passage.
- Management of vegetation retention and clearing.
- Amelioration and screening topsoil.
- Construction of several bio-retention basins.



URBAN

YAMBA COVE, PALM LAKES RESORTS

PALM LAKES RESORTS | VALUE: \$7.2M | 2021 - 2022

Palm Lakes Resorts, Yamba Cove – Yamba is an exclusive over 50's facility including 78 residential lots and a large community center which includes a Luxury movie theatre, Pilates Studio, Golf simulator, gym and a pool.

Over the duration of the project the design was optimised to allow for the land use to be maximised allowing these items to be included in the final product. The site bordered protected mangroves and an open water channel,

requiring careful protection throughout the works. SEE Civil set up environmental controls from the start and regularly reviewed them.

During service installation, some sewer and stormwater sections were below the groundwater table, affected by tidal movements. Due to the site's proximity to the river and sandy conditions, the work was carefully timed to minimise groundwater impact.



INDUSTRIAL

EMPIRE INDUSTRIAL ESTATE

THE STEPHENS GROUP | VALUE: \$80M TO DATE | 2015 - CURRENT

SEE Civil is proud to be the sole source civil contractor on the Empire Industrial Estate since its very first soil turning in April 2015.

The Empire Industrial Estate covers 127ha over 10 stages. Stages 1 to 10 of earthworks and civils are complete with final civil packages underway for stages 7A, 7B along with the external roundabout upgrade. Extensive civil works and external infrastructure upgrades have also been undertaken to facilitate the

development of large industrial and commercial facilities. The most recent project was Stage 7B with completion in January 2024, the project was on time, on budget and as usual to a high standard. The project included crushing of large boulders and rock to a level 1 required material which was stockpiled on site following works completion.



INDUSTRIAL

VANTAGE INDUSTRIAL ESTATE

FRASERS PROPERTY INDUSTRIAL | VALUE: \$33M | 2020 - CURRENT

SEE Civil were awarded two stages of the Vantage Industrial Estate in Yatala QLD.

The 650,000m² estate is situated in a prime location between Brisbane and the Gold Coast and includes over 2.3 hectares of green open space, 5.5km of running and bike tracks, a network of outdoor exercise equipment, rainwater capture and reuse systems. Stage 1 involved the development and subdivision of Lot 501 into Stage 1 comprising 23 lots and Lot 700, which will in the future become Stages 2 & 3. Externally there are road widening works

and construction of a signalised intersection on Stapylton Jacobs Well Road, as well as roadworks extending Emery Street into the estate road network.

Stage 2 involved the development and the subdivision of Lot 502 comprising 8 Lots and Lot 503, which will become Stage 3. Externally there are road widening works and construction of an intersection on Christensen Road.

YOU GOT A HARD TASK?



WHATEVER THE TASK, OUR DOWN TO EARTH TEAM IS UP TO THE JOB.

At SEE Group, we thrive on challenges and take pride in our relentless work ethic. Hard work isn't just what we do - it's who we are. From complex projects to the toughest assignments, you can count on us to deliver results with dedication and integrity. Hard works for us, and we'll make it work for you.



LOCAL GOVERNMENT INFRASTRUCTURE

LOCAL GOVERNMENT INFRASTRUCTURE



KINGSCLIFF FORESHORE REDEVELOPMENT

CLIENT: TWEED SHIRE COUNCIL | VALUE: \$14.1M | TIMING: 2017 - 2018

The revitalisation of the Kingscliff foreshore brings the protection of the foreshore, including the creation of a central park with active and passive space, and modernisation of a key tourism asset, the Kingscliff Beach Holiday Park.

Works included:

- Rock armour and concrete seawall (including piling) foreshore protection works

- Associated construction and landscaping works for the creation of the new Kingscliff Central Park and viewing platforms.
- Associated construction and landscaping works for the upgrade of the Kingscliff Beach Holiday Park including all civil infrastructure.

LOCAL GOVERNMENT INFRASTRUCTURE



TALLEBUDGERA CREEK WALL RENEWAL

CLIENT: CITY OF GOLD COAST | VALUE: \$3.7M | TIMING: 2022 - 2023

The Tallebudgera Creek Training Wall located at the Northern End of Palm Beach, acts to formalise the entrance to Tallebudgera Creek, while providing a stabilising effect to the beach to the south.

The project works consist of:

- 320m of rock wall structure, comprising a central core of rock material protected by Armour stone.

- Renewal of the structure is required to ensure that the integrity of the structure is maintained and continues to function effectively and safely.
- The renewal works involve re-using existing rock material and the supply of additional rock and other construction materials to achieve the design.
- Extensive site improvements including pathways and landscaping

LOCAL GOVERNMENT INFRASTRUCTURE



BROWNS PLAINS WASTE RECYCLING FACILITY

CLIENT: LOGAN CITY COUNCIL | VALUE: \$8M | TIMING: 2021 - 2022

Browns Plains Waste Recycling Facility is an active landfill site that provides recycling and waste management services to the residents of Logan City Council and commercial customers.

Logan City Council have engaged SEE Civil to construct Cell 2E (Phase 2) to ensure the required disposal capability is maintained. The Cell to be constructed is approximately 46,900m².

Logan City Council have also engaged SEE Civil in completing the stormwater upgrade works around the perimeter of the landfill site including culverts, a high efficiency sediment basin (HESB) and lined drains to capture and treat the stormwater within the site

LOCAL GOVERNMENT INFRASTRUCTURE



SURFERS PARADISE SAND BACKPASS PIPELINE

GOLD COAST CITY COUNCIL | \$6.3M | 2021 - 2022

The Surfers Paradise Sand Backpass Pipeline (the Pipeline) recycles and delivers natural sand from The Spit to Surfers Paradise to buffer against future storms and coastal erosion.

The Pipeline was completed over 2 stages and consisted of 7.8 kilometres of permanent

underground 450 dia HDPE pipe and temporary above ground pipe.

Stage 2 of the works was 5.8km in total, starting at the Sand Backpass Pumping Station and joining onto Stage 1 works at Narrowneck Beach, Surfers Paradise.

MAJOR PROJECT



CLIENT: GOLD COAST AIRPORT
 LOCATION: GOLD COAST, QLD
 VALUE: \$120M
 TIMING: 2007 - CURRENT



GOLD COAST AIRPORT INFRASTRUCTURE

250K SQUARE METRES
 OF ASPHALT
 AIRSIDE PAVEMENTS

900 METRES OF
 JOINT USE HYDRANT
 INFRASTRUCTURE

2,6K SQUARE METRES
 OF PCC AIRSIDE
 PAVEMENTS

0 UNPLANNED IMPACTS
 TO AIRSIDE
 OPERATIONS

SEE Civil has been the primary civil contractor at Gold Coast Airport (GCA) for over 17 years, undertaking a variety of airside projects such as Joint User Hydrant Infrastructure, new taxiway pavements, apron overlay work, significant drainage upgrades and various landside projects.

Our experience has allowed us to develop a solid understanding of the unique requirements of working in and around an operational airport environment, and our experienced aviation project delivery team has become the civil contractor of choice for Gold Coast Airport Limited (GCAL) and Queensland Airports Limited (QAL).



TAXIWAY CHARLIE LINK
 TIMING: 2020 - 2020 | VALUE: \$11M



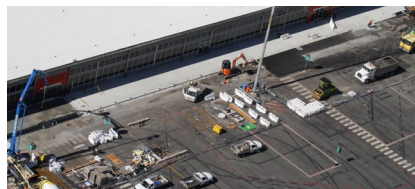
GROUND TRANSPORT INFRASTRUCTURE
 TIMING: 2017 - 2018 | VALUE: 9.6M

“SEE Civil personnel have developed positive and collaborative working relationships with all Airport stakeholders. Their constructive attitude towards the early identification and resolution of potential issues has resulted in various win/win outcomes and the avoidance of unnecessary delays”.

TRAVIS CALLAGHAN, GENERAL
 MANAGER INFRASTRUCTURE,
 QUEENSLAND AIRPORTS LIMITED

Working airside in the constraints of an operational airport had been a challenge. The project was successfully completed just in time for aircraft-carrying visitors, officials, and athletes for the Gold Coast 2018 Commonwealth Games. Improved operational efficiency and increased aircraft taxi routing options have been delivered by this project.

The Ground Transport Infrastructure (GTI) project was initially awarded as a single stage project to facilitate the infill of a portion of Coolangatta Creek unlocking a new portion of land for a Hotel development to commence. This included extension of large stormwater infrastructure and careful management of large stormwater catchment flows.



REGULAR PASSENGER TRANSPORT APRON
 TIMING: 2020 - 2020 | VALUE: \$6.4M



JOINT USER HYDRANT INFRASTRUCTURE
 TIMING: 2017 - 2018 | VALUE: \$6.3M

Demolition of existing apron pavements and construction of new flexible aircraft pavements including installation of new stormwater drainage and surface ACO drain structures. Electrical alteration works, including new MAG signs and new airfield ground lighting. Demolition of existing apron pavements and construction of new Portland Cement Concrete concrete slab pavements.

The project focused on the construction of Joint User Hydrant Infrastructure and extension of existing fuel lines on the Gold Coast Airport domestic apron. SEE Civil successfully relocated the Caltex fuel main from Bay 10 to Bay 7. It was an integral project to ensure the airport could cater for the increased usage demands of large international planes prior to the 2018 Commonwealth Games.

RESOURCES AND MINING

RESOURCES AND MINING



AQUILA MINE OVERLAND CONVEYOR AND PIT G CIVIL WORKS

CLIENT: ANGLO AMERICAN | VALUE: \$26M | TIMING: 2020 - 2020

Aquila is an underground hard-coking coal mine near Middlemount, which will extend the life of Anglo American's existing Capcoal underground operations by six years to 2028, and continue to optimise the Capcoal complex.

The Overland Conveyor area involves bulk earthworks, pavements, piling, structures footings, and finishing works for the incoming contractor to install the conveyor mechanical and electrical.

The Pit G area of the project is to be raised approximately 3m for flood immunity from a Q2000 flood event and involves upgrading the current Road into the pit, installing drainage culverts, piling works, structures for the conveyor foundations, precast retaining walls, bulk earthworks and pavements.

RESOURCES AND MINING



ANDOOM HAUL ROAD CONSTRUCTION

CLIENT: RIO TINTO | VALUE: \$18M | TIMING: 2022 - 2022

SEE Civil was engaged to construct the Rio Tinto Aluminum (RTA) Andoom Haul Road project. We have constructed the 11.1km Wallam Haul Road to facilitate future operations at Andoom Mine.

The project is located at Rio Tinto's Andoom Bauxite mine. Wallam Haul Road is located approximately 35km north of the RTA Weipa Campus.

Generally, the scope of works includes earthworks, foundation improvements, roadworks, drainage works, concrete structural works and all associated works.



RESOURCES AND MINING



MORANBAH NORTH MINE DAM 6 CIVIL WORKS AND CDA NORTHERN EXPANSION

CLIENT: ANGLO AMERICAN | VALUE: \$26M | TIMING: 2020 - 2020

Moranbah North Mine (MNM) is an operating longwall coal mine located approximately 7 km north of Moranbah township in Central Queensland.

The Moranbah North Mine – Dam 6 and Co-Disposal Area Northern Expansion Civil Works project commenced in June 2021 and was completed in June 2022.



MAJOR PROJECT

NEWMONT

CLIENT: NEWMONT CORPORATION
 LOCATION: ORANGE, NSW
 VALUE: \$260M+
 TIMING: 2023 - CURRENT



CADIA MINE RESOURCES AND MINING

7 MILLION
 CUBIC METRES
 OF EARTHWORKS

260 SKILLED
 WORKFORCE

65 OWNED AND OPERATED
 HEAVY EARTHMOVING
 EQUIPMENT

SNAPSHOT OF SEE CIVIL AND
 SEE FLEET'S CAPABILITIES
 AT CADIA

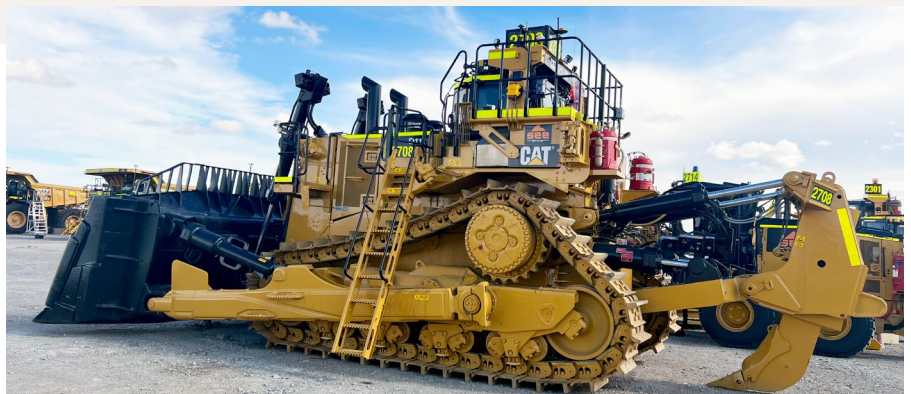
CADIA INTEGRATED TAILINGS PROJECT

SEE Civil is at the forefront of delivering a critical component of Newmont's Cadia Gold Mine Integrated Tailings Project in Orange, NSW. This significant project involves the loading, hauling, and precise placement of over 10.7 million cubic metres of earthworks, essential to the ongoing sustainability of one of Australia's largest gold mining operations. Our project workforce, consisting of over 260 skilled operators and staff, combines local expertise with a highly specialised DIDO and FIFO team, ensuring the project benefits from both regional knowledge and industry-leading experience.

Central to the success of this project is SEE Fleet, our in-house plant department, which provides unrivaled support through advanced equipment. A notable aspect of the project involved using two remote-controlled D11 Dozers to spread and push approximately 350,000 cubic metres of fill over distances of up to 150 metres. This innovative approach not only improved operational efficiency but also ensured safety and precision in challenging conditions. SEE Civil's role in this landmark project showcases our ability to execute large-scale earthworks with precision, leveraging both human expertise and cutting-edge technology to meet the exacting demands of the mining industry.

PLANT AND EQUIPMENT

| | |
|----|---------------------------|
| 3 | D11 Remote Control Dozers |
| 4 | D11 Dozers |
| 2 | D10 Dozers |
| 1 | 993 Loader |
| 2 | 360t Excavators |
| 2 | 120t Excavators |
| 2 | 90t Excavators |
| 4 | 50t Excavators |
| 10 | 793 Trucks |
| 14 | 777 Trucks |
| 3 | 16M Graders |
| 2 | 14M Graders |
| 16 | 745 Trucks |
| 4 | B45 Water Carts |
| 2 | 773 Water Carts |
| 1 | 775 Water Cart |
| 2 | 777 Water Carts |





A VEHICLE FOR VISION



Our specialty is fleet and asset solutions to maximise up-time and efficiency.

SEE Fleet offers cutting-edge fleet and asset solutions accompanied by comprehensive maintenance services. Our in-house expertise includes logistics, whole-of-life asset management, scheduled maintenance and repairs, major equipment overhauls, design, fabrication, blast and paint to ensure our equipment is ready for the task at hand.

Our mobile maintenance solutions provide workshop and field service capabilities for remote mining infrastructure projects. With a large diverse fleet of late-model construction and mining assets ranging in size up to 400 tonnes – we are primed to provide top-notch solutions for projects of various scales. From niche endeavours to large-scale undertakings, our offerings are designed to meet unique project demands.

SEE SOLUTIONS. NOT PROBLEMS.

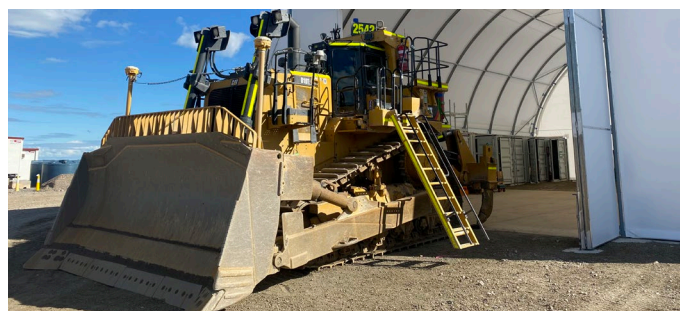
WE SPECIALISE IN SOLUTIONS
THAT STREAMLINE THE SITE
BUT DON'T COST ON QUALITY



TOP TIER MINING GEAR



| PLANT AND EQUIPMENT | QUANTITY | PLANT AND EQUIPMENT | QUANTITY |
|-----------------------------|----------|-----------------------------------------|----------|
| DOZERS | 21 | LOADERS | 15 |
| CAT D1 Dozer | 1 | 10t Loader - 1.5m ³ Bucket | 5 |
| D6/D65 Dozer with GPS | 6 | 15t Loader - 2.5m ³ Bucket | 1 |
| D7/D85 Dozer with GPS | 1 | 17t Loader - 3.0m ³ Bucket | 3 |
| D8/D155 Dozer with GPS | 1 | 20t Loader - 3.5m ³ Bucket | 1 |
| D9/D275 Dozer with GPS | 4 | 26t Loader - 4.5m ³ Bucket | 1 |
| D10/D375 Dozer with GPS | 6 | 35t Loader - 5.5m ³ Bucket | 4 |
| D11/D475 Dozer with GPS | 4 | ROLLERS | 14 |
| DUMP TRUCKS | 68 | 18t Smooth Drum Roller | 4 |
| 793F Rigid Dump Truck | 6 | 3 Point Roller | 2 |
| 777 100t Rigid Dump Truck | 10 | Trench Roller | 8 |
| 60t Rigid Dump Truck | 2 | ATTACHMENTS | 402 |
| 60t Dump Truck Articulated | 4 | WATER TRUCKS | 17 |
| 45T Dump Trucks Articulated | 31 | B45E Art Water Truck | 2 |
| 40T Dump Trucks Articulated | 1 | Rigid Water Truck (45000ltrs) | 7 |
| 30t Rigid Trucks | 2 | 777F Water Truck (76000ltrs) | 2 |
| 30t Dump Truck Articulated | 12 | On Highway Water Truck 8000 - 16000ltrs | 6 |
| EXCAVATORS | 74 | SERVICE TRUCKS | 17 |
| 360T Excavator | 1 | 773F Service Truck | 2 |
| 120T Excavator with GPS | 2 | On Highway Service Truck | 2 |
| 90T Excavator with GPS | 4 | Maintenance Support Vehicles | 13 |
| 70t Excavator with GPS | 3 | Sheet Piling Rigs | 2 |
| 50t Excavator with GPS | 10 | Sheet Piles | Various |
| 36t Excavator with GPS | 13 | Light Vehicles | 315 |
| 30t Excavator with GPS | 18 | | |
| <30t Excavators | 24 | | |
| GRADERS | 9 | | |
| 18M Grader | 1 | | |
| 16M Grader with GPS | 2 | | |
| 150AWD Grader with GPS | 3 | | |
| 14M Grader with GPS | 4 | | |

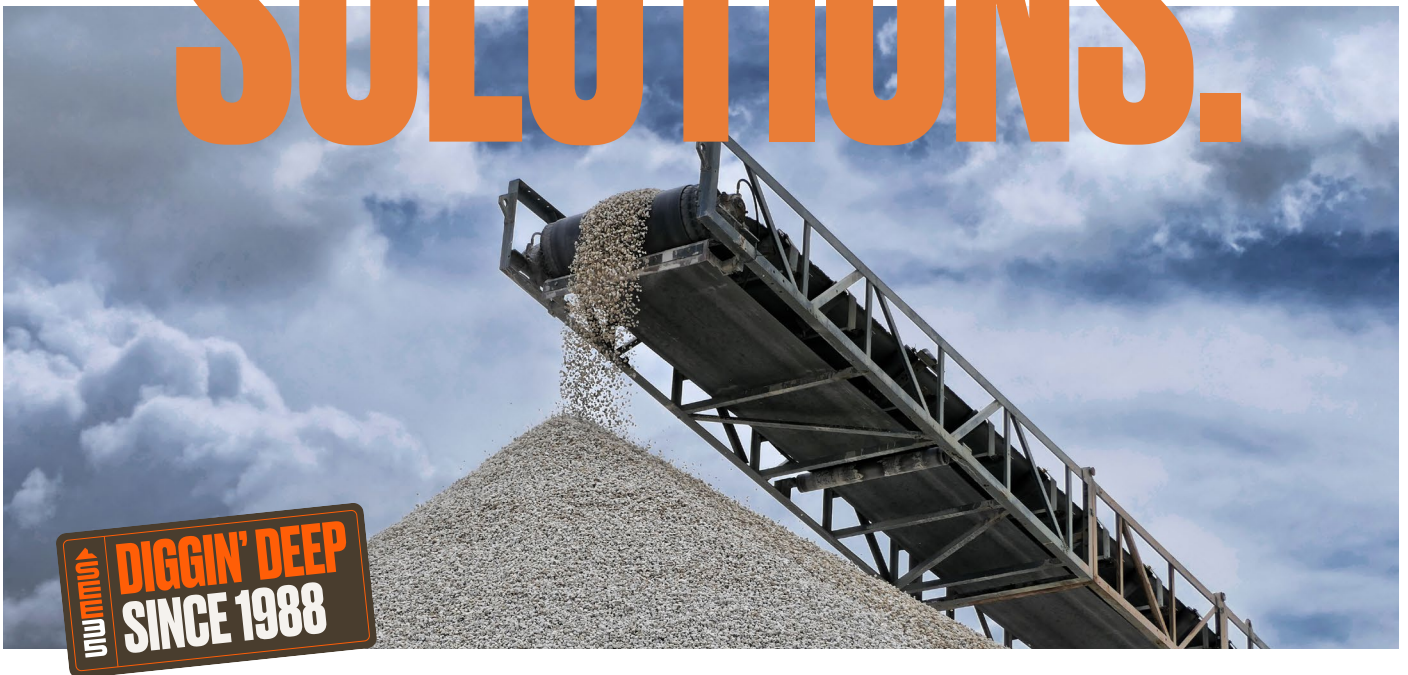


[SEE FLEET]

DRIVING PROGRESS THROUGH RELIABLE FLEET MANAGEMENT.

**MODERN FLEET****MINING****MAINTENANCE****PLANT HIRE****LOGISTICS AND MOBILISATION****SUSTAINABLE ASSETS**

UNEARTHING SOLUTIONS.



The high-volume, high-quality quarrying and crushing experts.

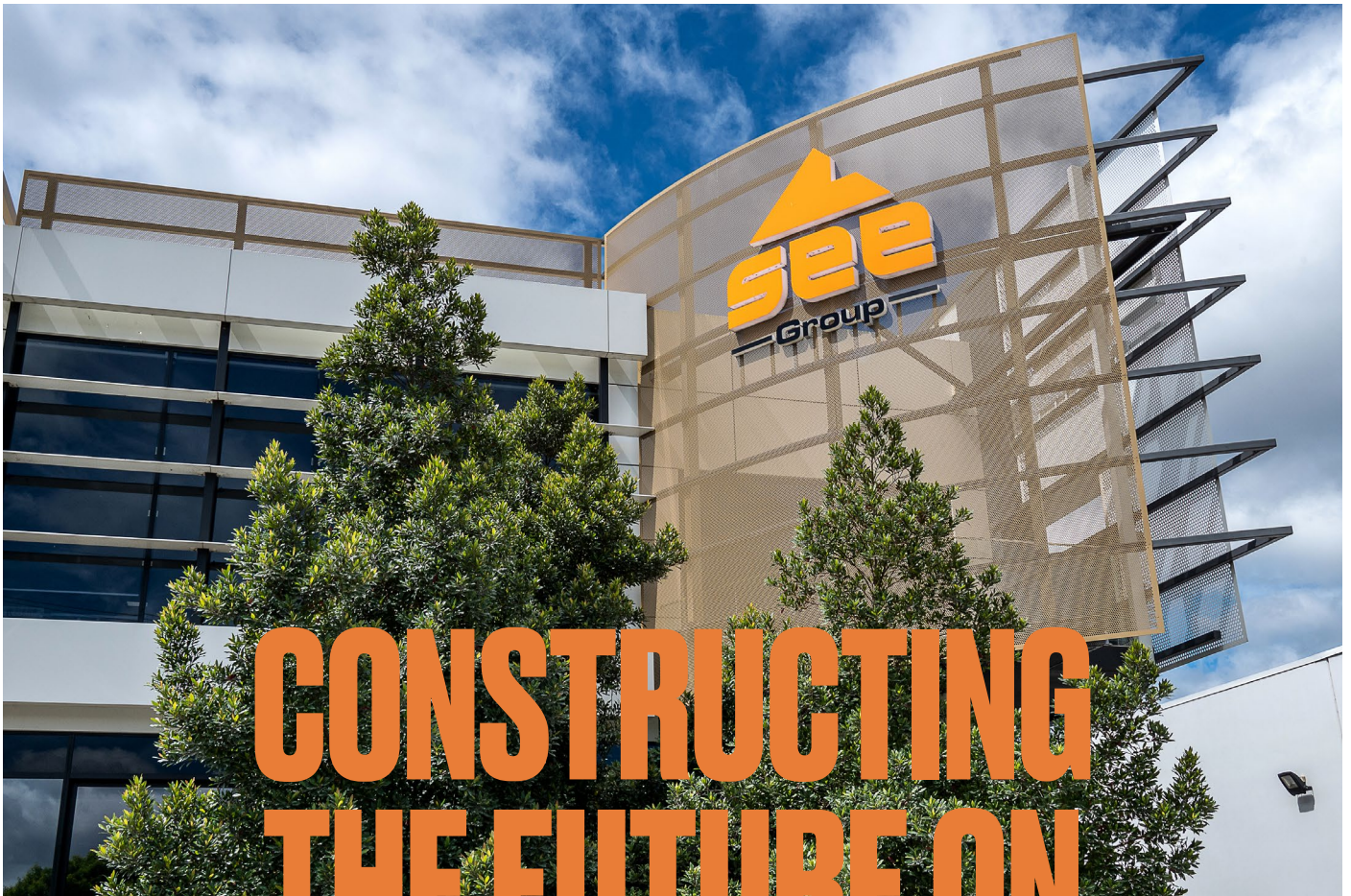
SEE Quarry is a specialist quarrying and material supply company. We've established ourselves as a market leader in the delivery of high volume, high specification material supplies to projects through SEQ and NNSW including fixed and mobile crushing operations, sand mining and foam bitumen production.

Since 2008, Quarry Solutions has owned and operated quarries under various arrangements in northern New South Wales and south east Queensland. Our experienced in quarry and mobile production teams operate with a 'high-volume, high-quality' delivery approach.

We operate up to ten fixed quarry sites at any given time along with additional capacity for mobile crushing and screening operations as required. Our team includes dedicated safety and quality personnel as well as a team of experienced plant operators and mechanics to ensure each site is self-sufficient and production can be maximised safely.

Our quarry teams build strong working relationships with clients through collaboration and by developing innovative materials and association solutions that deliver best for project outcomes.





**CONSTRUCTING
THE FUTURE ON
THE STRENGTH
OF OUR PAST.**

Adam Batson
Pre-Contracts Manager
0400 115 565
adam.batson@seecivil.com.au

Dan McMath
Business Development Manager
0450 584 747
daniel.mcmath@seecivil.com.au

Contact Us
108 Siganto Dr,
Helensvale QLD 4212
(07) 5671 9601
info@seecivil.com.au

seegroup.com.au

